

Sorting Examples



Anhui Jiexun Optoelectronic Technology Co.,Ltd

Marketing hotline: 0086-551-64266956      Service Hotline: 0086-551-64266956  
 Address: No.6 Xiaocheng Road of Industrial Park, New Station District, Hefei, Anhui, China  
 E-mail: jiexun@hfjiexun.com      Website: www.hfjiexun.com



JIEXUN CLOUD TECHNOLOGY  
LEADING FUTURE



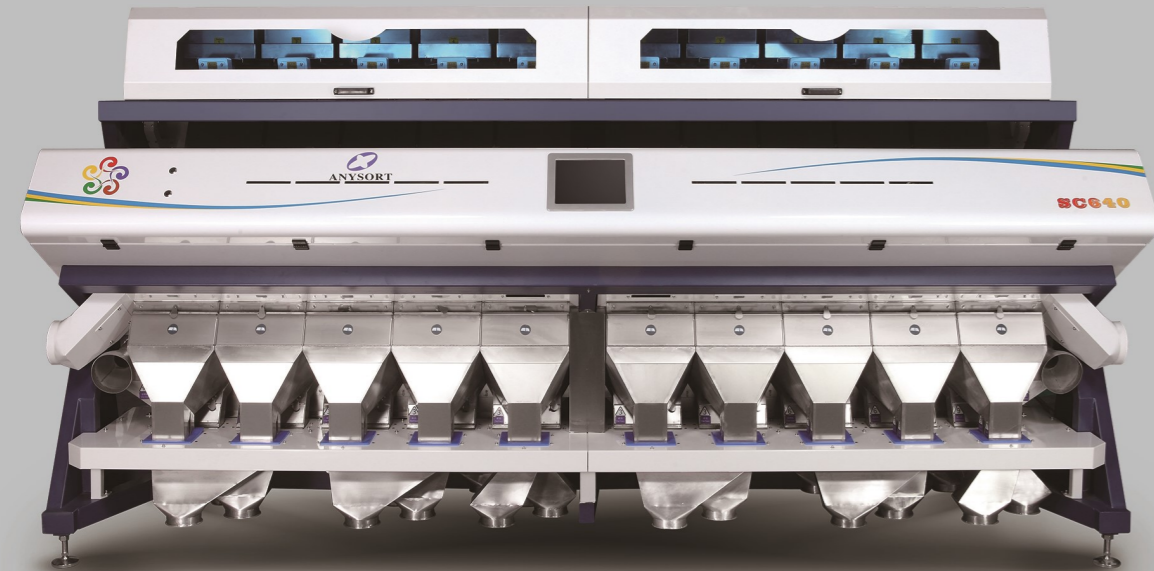
THE THIRD GENERATION CLOUD COLOR SORTER



Anhui Jiexun Optoelectronic Technology Co.,Ltd

# SC 640

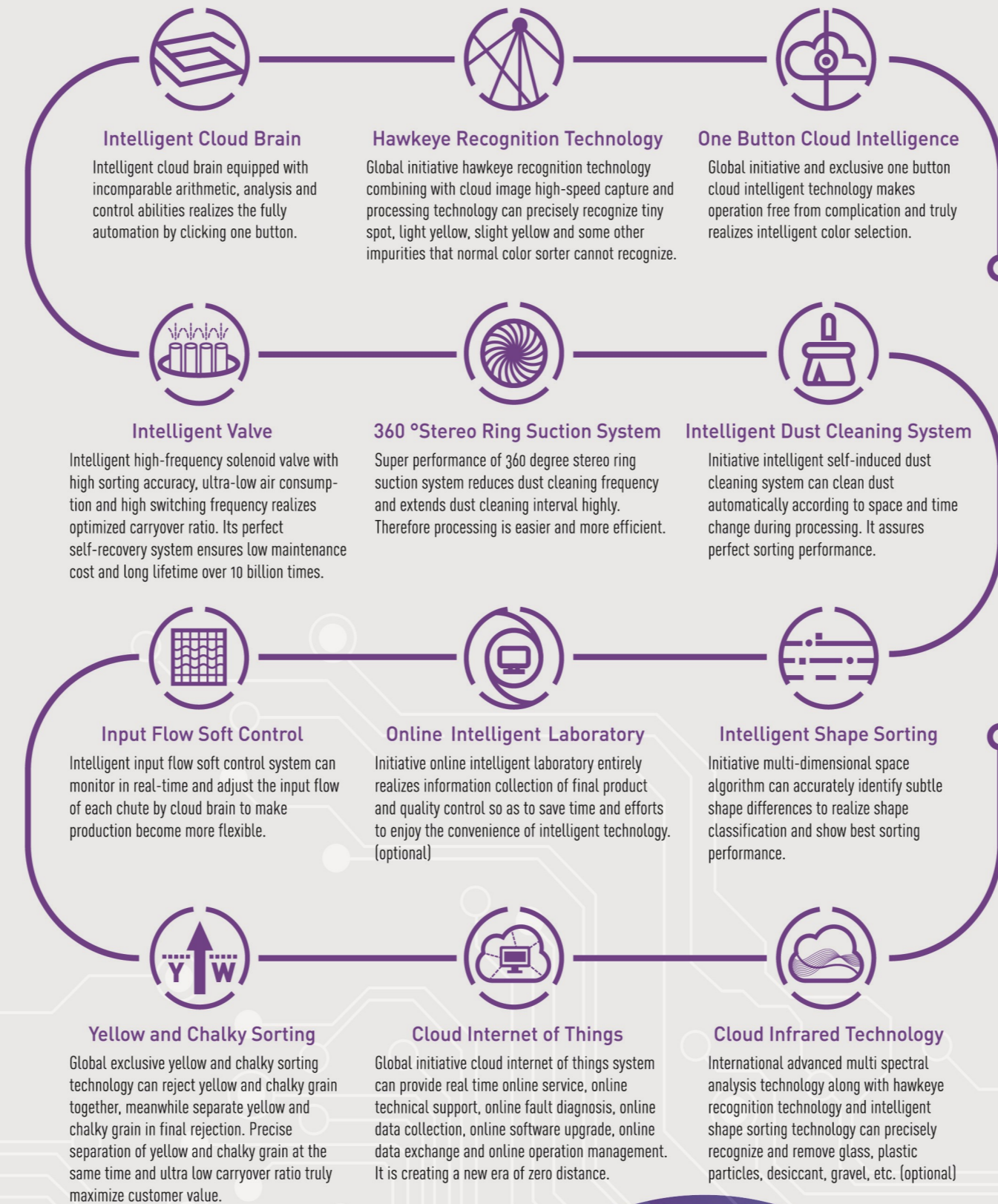
CONSTANTLY STRIVING FOR EXCELLENCE  
INTELLIGENT CLOUD SORTING



## Model and Specification

| Model  | Throughput(t/h) | Sorting Accuracy(%) | Optimized Carryover | Power(kw) | Power Supply    | Dimension LxWxH(mm) | Weight(kg) |
|--------|-----------------|---------------------|---------------------|-----------|-----------------|---------------------|------------|
| SC320  | 3-15            | ≥99.99              | >30:1               | 3.0       | 220V/50HZ(60HZ) | 2360*1575*1814      | 1150       |
| SC384  | 5-17            | ≥99.99              | >30:1               | 3.2       | 220V/50HZ(60HZ) | 2700*1688*2044      | 1250       |
| SC448  | 5-25            | ≥99.99              | >30:1               | 4.0       | 220V/50HZ(60HZ) | 3040*1688*2044      | 1500       |
| SC512  | 7-27            | ≥99.99              | >30:1               | 5.0       | 220V/50HZ(60HZ) | 3380*1688*2044      | 1600       |
| SC640  | 9-35            | ≥99.99              | >30:1               | 6.5       | 220V/50HZ(60HZ) | 4100*1575*1814      | 2500       |
| SC768  | 11-39           | ≥99.99              | >30:1               | 7.0       | 220V/50HZ(60HZ) | 4780*1688*2044      | 2600       |
| SC320D | 3-15            | ≥99.99              | >30:1               | 3.0       | 220V/50HZ(60HZ) | 2360*1688*2044      | 1150       |
| SC384D | 5-17            | ≥99.99              | >30:1               | 3.2       | 220V/50HZ(60HZ) | 2700*1688*2044      | 1250       |
| SC448D | 5-25            | ≥99.99              | >30:1               | 4.0       | 220V/50HZ(60HZ) | 3340*1688*2044      | 1500       |
| SC512D | 7-27            | ≥99.99              | >30:1               | 5.0       | 220V/50HZ(60HZ) | 3380*1688*2044      | 1600       |
| SC640D | 9-35            | ≥99.99              | >30:1               | 6.5       | 220V/50HZ(60HZ) | 4100*1688*2044      | 2500       |
| SC768D | 11-39           | ≥99.99              | >30:1               | 7.0       | 220V/50HZ(60HZ) | 4780*1688*2044      | 2600       |
| SC320R | 3-15            | ≥99.99              | >30:1               | 3.5       | 220V/50HZ(60HZ) | 2360*1688*2044      | 1300       |
| SC384R | 5-17            | ≥99.99              | >30:1               | 4.0       | 220V/50HZ(60HZ) | 2700*1688*2044      | 1400       |
| SC448R | 5-25            | ≥99.99              | >30:1               | 4.5       | 220V/50HZ(60HZ) | 3040*1688*2044      | 1700       |
| SC512R | 7-27            | ≥99.99              | >30:1               | 5.0       | 220V/50HZ(60HZ) | 3380*1688*2044      | 1800       |
| SC640R | 9-35            | ≥99.99              | >30:1               | 7.0       | 220V/50HZ(60HZ) | 4100*1688*1814      | 2700       |
| SC768R | 11-39           | ≥99.99              | >30:1               | 7.5       | 220V/50HZ(60HZ) | 4780*1688*2044      | 2800       |

**Note:** Subject to different raw materials and different impurities percentage in raw materials, parameters listed in above table will change to some extent, which are references for you choosing a suitable model.



## Twelve Core Technologies

INTELLIGENT  
COLOR  
SELECTION

CLOUD  
Generation

## Customer Application Case

